



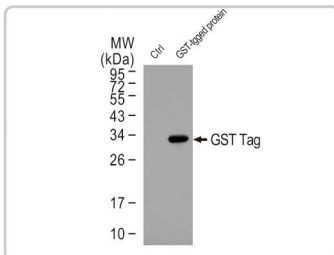
# GeneTex

Your Expertise, Our Antibodies, Accelerated Discovery.

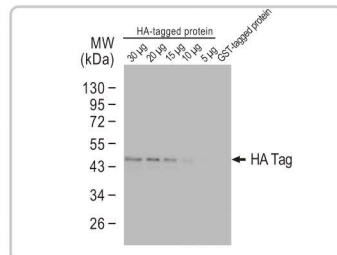
## Epitope Tag & Reporter Antibodies



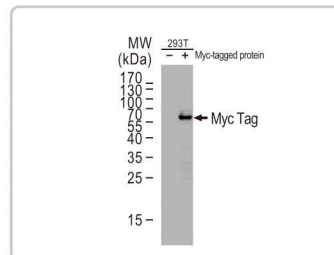
Citation Support



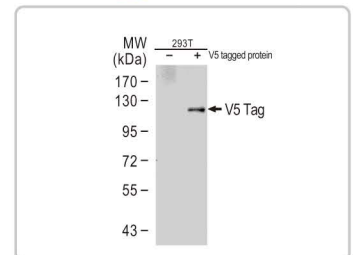
**GST tag antibody [3G10]**  
(GTX70195)



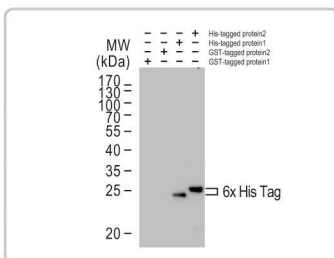
**HA tag antibody [GT423]**  
(GTX628489)



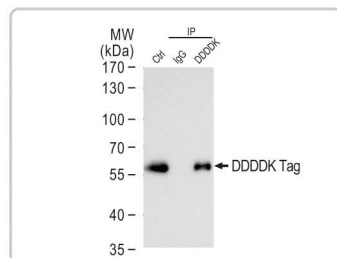
**Myc tag antibody [GT0002]**  
(GTX628259)



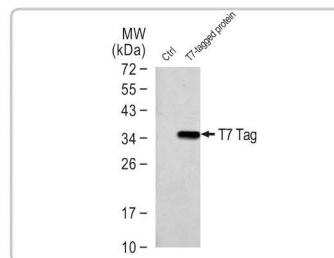
**V5 tag antibody**  
(GTX117997)



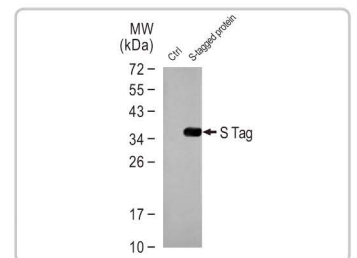
**6X His tag antibody [GT359]**  
(HRP) (GTX628914-01)



**DDDDK tag antibody [GT231]**  
(GTX629631)



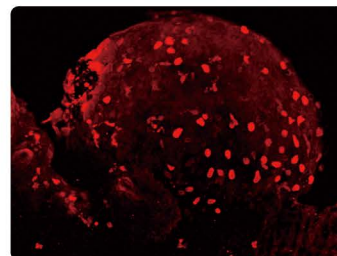
**T7 tag antibody**  
(GTX128059)



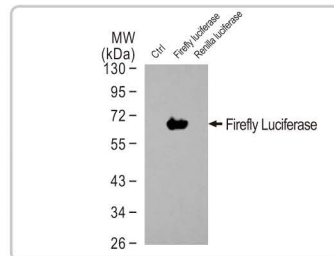
**S Tag antibody [GT247]**  
(GTX628791)



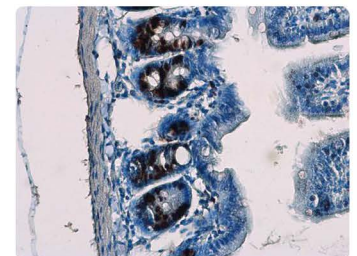
**GFP antibody (GTX113617)**



**mCherry antibody**  
(GTX128508)



**Firefly Luciferase antibody**  
(GTX125849)



**BrdU antibody (GTX128091)**

### Representative Publications

**GST tag antibody [3G10] (GTX70195)**  
J Biol Chem. 2017 Feb 10;292(6):2369-2378. (IP)  
Nat Cell Biol. 2009 Aug;11(8):967-72. (IP)

**6X His tag antibody (HRP) (GTX628914-01)**  
Acta Crystallogr D Biol Crystallogr. 2015 Apr;  
71(Pt 4):1006-21. (WB)

**HA tag antibody [GT423] (GTX628489)**  
Virology. 2016 Sep;496:116-26. (WB)  
Sci Rep. 2015 Mar 5;5:8796. (WB)

**S Tag antibody [GT247] (GTX628791)**  
Mol Biol Cell. 2015 Feb 1;26(3):440-52. (WB)

**Myc tag antibody [GT0002] (GTX628259)**  
EMBO Rep. 2016 May;17(5):695-707. (ICC/IF)

**GFP antibody (GTX113617)**  
Sci Rep. 2016 Apr 18;6:24023. (WB)  
Circ Res. 2015 Feb 13;116(4):633-41. (IHC-P)

**V5 tag antibody (GTX117997)**  
Mol Cell Biol. 2017 Apr 3. pii: MCB.00437-16. (WB)  
Sci Rep. 2016 May 24;6:26618. (WB)

**mCherry antibody (GTX128508)**  
Biochem J. 2015 Oct 15;471(2):199-209. (WB)  
J Biomed Sci. 2015 Nov 17;22:102. (WB)

## Tag Antibodies

 Citation Support

| Cat. No.  | Product Name                      | Host & Clonality | Application                 |
|---|-----------------------------------|------------------|-----------------------------|
|  GTX628914    | 6X His tag antibody [GT359]       | Ms mAb           | ELISA, ICC/IF, IP, WB       |
|  GTX628914-01 | 6X His tag antibody [GT359] (HRP) | Ms mAb           | WB                          |
|  GTX115043    | DDDDK tag antibody                | Rb pAb           | ELISA, FACS, ICC/IF, IP, WB |
|  GTX629631    | DDDDK tag antibody [GT231]        | Ms mAb           | IP, WB                      |
| GTX21267  | Glu-Glu tag antibody (HRP)        | Gt pAb           | ELISA, ICC/IF, IHC, WB      |
| GTX30789  | Glu-Glu tag antibody [Glu-Glu]    | Ms mAb           | ICC/IF, IHC, IP, WB         |
|  GTX110736    | GST antibody                      | Rb pAb           | IP, WB                      |
|  GTX70195     | GST tag antibody [3G10]           | Ms mAb           | IP, WB                      |
|  GTX115044    | HA tag antibody                   | Rb pAb           | ELISA, ICC/IF, IP, WB, IB   |
|  GTX628489    | HA tag antibody [GT423]           | Ms mAb           | ICC/IF, IP, WB              |
|  GTX628259    | Myc tag antibody [GT0002]         | Ms mAb           | ICC/IF, IP, WB              |
| GTX628259-01  | Myc tag antibody [GT0002] (HRP)   | Ms mAb           | WB                          |
|  GTX128060    | S Tag antibody                    | Rb pAb           | ICC/IF, IP, WB              |
|  GTX628791    | S Tag antibody [GT247]            | Ms mAb           | IP, WB                      |
| GTX128061   | Strep Tag antibody                | Rb pAb           | WB                          |
| GTX628900   | Strep Tag antibody [GT661]        | Ms mAb           | ICC/IF, IP, WB              |
| GTX128059   | T7 tag antibody                   | Rb pAb           | WB                          |
|  GTX117997    | V5 tag antibody                   | Rb pAb           | ICC/IF, IP, WB              |
| GTX628529   | V5 tag antibody [GT1071]          | Ms mAb           | ICC/IF, IP, WB              |
|  GTX23863     | VSV-G tag antibody (FITC)         | Gt pAb           | ICC/IF, IHC                 |
| GTX23862  | VSV-G tag antibody (HRP)          | Gt pAb           | ELISA, ICC/IF, IHC, WB      |


## Reporter Antibodies

 Citation Support

| Cat. No.   | Product Name                  | Host & Clonality | Application                                       |
|--|-------------------------------|------------------|---|
| GTX59680   | BFP antibody                  | Rb pAb           | WB  |
|  GTX124262 | Biotin antibody               | Rb pAb           | WB  |
|  GTX128091 | BrdU antibody                 | Rb pAb           | FACS, ICC/IF, IHC, IHC-Fr, IHC-P                  |
|  GTX21893  | BrdU antibody                 | Shp pAb          | ELISA, ICC/IF, IHC, IHC-Fr, IHC-P, IP             |
|  GTX26326  | BrdU antibody [BU1/75 (ICR1)] | Rat mAb          | FACS, ICC/IF, IHC-Fr, IHC-P                       |
| GTX59717   | CFP antibody                  | Rb pAb           | WB  |
|  GTX125849 | Firefly Luciferase antibody   | Rb pAb           | IHC-Fr, WB  |
|  GTX19490  | FITC antibody                 | Gt pAb           | ELISA, ICC/IF, IHC, IHC-Fr, WB                    |
|  GTX113617 | GFP antibody                  | Rb pAb           | ELISA, ICC/IF, IHC, IHC-Fr, IHC-P, IP, WB, IHC-Wm |
|  GTX628528 | GFP antibody [GT859]          | Ms mAb           | ELISA, ICC/IF, IHC-Fr, IHC-P, IP, WB, IHC-Wm      |
|  GTX128508 | mCherry antibody              | Rb pAb           | ICC/IF, IP, WB, IHC-Wm                            |
| GTX630144  | mCherry antibody [GT235]      | Ms mAb           | WB  |
|  GTX125851 | Renilla Luciferase antibody   | Rb pAb           | WB  |
|  GTX127897 | RFP antibody                  | Rb pAb           | ICC/IF, IP, WB                                    |
| GTX628545  | RFP antibody [GT1610]         | Ms mAb           | ICC/IF, IP, WB                                    |

## Others

 Citation Support

| Cat. No.  | Product Name                       | Host & Clonality | Application    |
|---|------------------------------------|------------------|----------------|
|  GTX53807 | Cas9 antibody [7A9]                | Ms mAb           | ICC/IF, IP, WB |
| GTX133299   | CPF1 antibody                      | Rb pAb           | ICC/IF, WB     |
| GTX133296   | CPF1 antibody                      | Rb pAb           | ICC/IF, WB     |
| GTX127271   | Cre recombinase antibody           | Rb pAb           | IP, WB         |
| GTX629479   | Cre recombinase antibody [GT10212] | Ms mAb           | IP, WB         |



### International

Tel 886.3.6208988  
 Fax 886.3.6208989  
 Address 6F-2, No.89, Dongmei Rd., Hsinchu 300, Taiwan (R.O.C.)  
 E-mail [international@genetex.com](mailto:international@genetex.com)

### USA

Toll-free 1.877.GeneTex(1.877.436.3839)  
 Fax 1.949.309.2888  
 Address 2456 Alton Parkway, Irvine, CA 92606 USA  
 E-mail [info@genetex.com](mailto:info@genetex.com)

