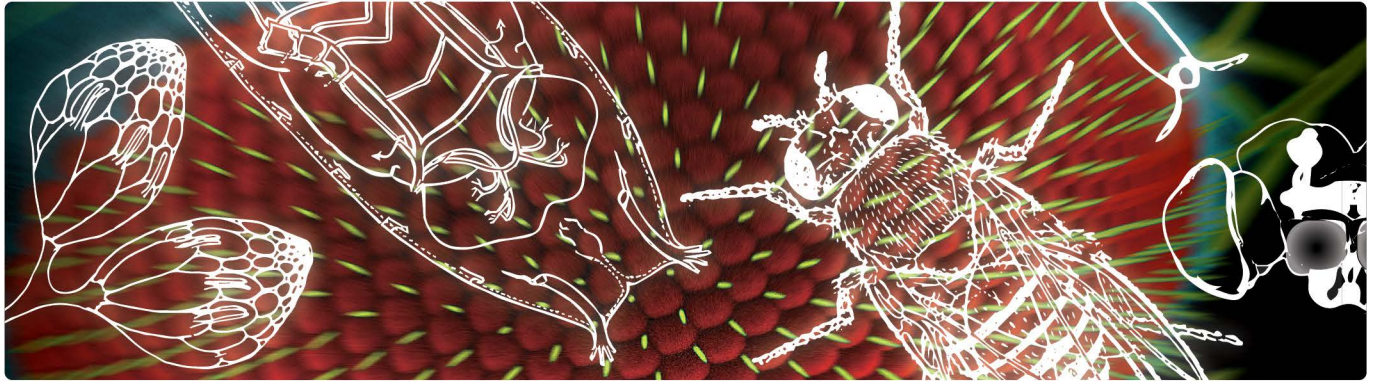


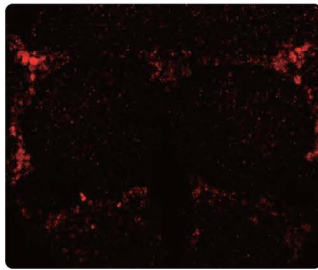
# Drosophila Antibodies

- Your Expertise
- Our Antibodies
- Accelerated Discovery

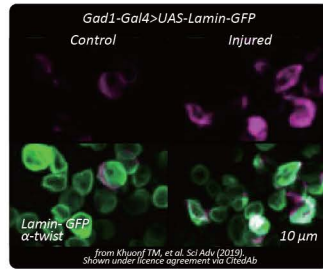
www.genetex.com



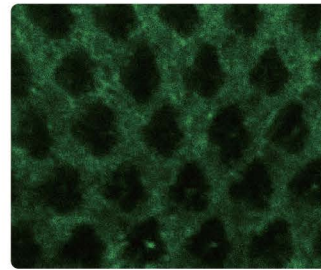
Recombinant
Citation Support
KO/KD Validation
Orthogonal Validation
Protein Overexpression



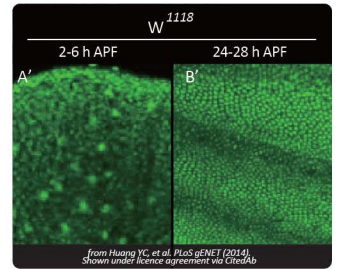
GABA antibody (GTX125988)



Twist1/2 antibody (GTX127310)

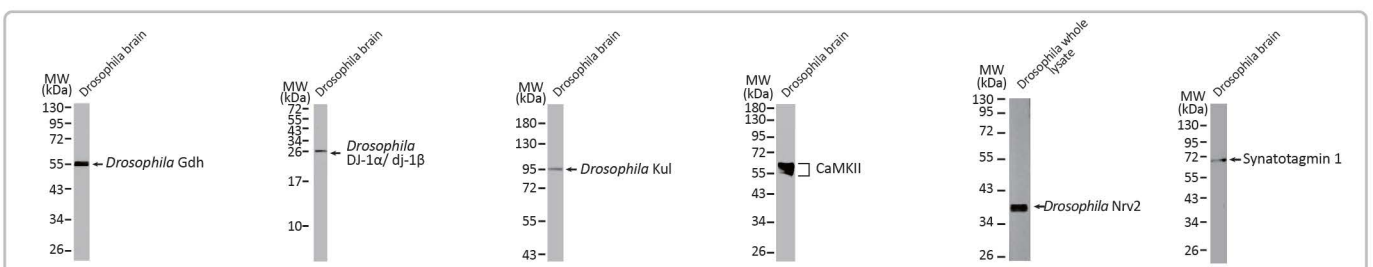


EPRS antibody (GTX130848)

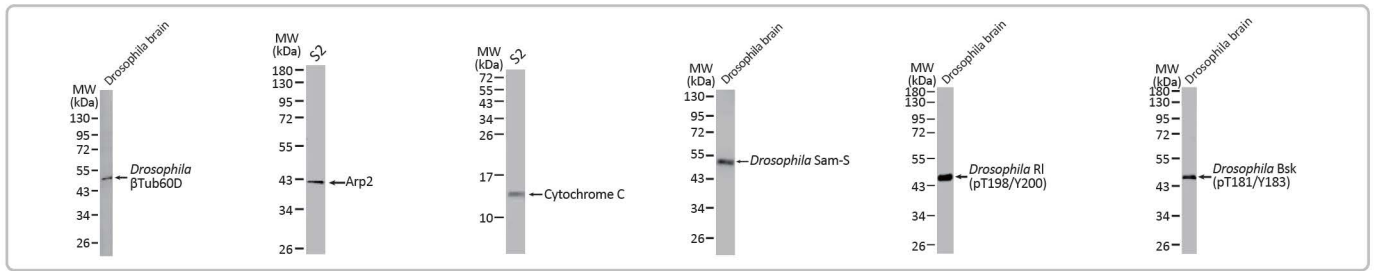


Histone H3 antibody (GTX122148)

	Cat. No.	Product Name	Clonality	Reactivity	Applications
Parkinson's Disease	GTX114054	Alcohol dehydrogenase 1B antibody [N2C3]	Rb pAb	Hu,Ms,Rat,Dm	WB
	GTX125988	GABA antibody	Rb pAb	Hu,Ms,Rat,Dm	ICC/IF, IHC-P, IHC-Fr, Dot, IHC
	GTX105765	GLUD1 + GLUD2 antibody	Rb pAb	Hu,Ms,Rat,Dm	WB, ICC/IF, IHC-P, ELISA
	GTX133283	Grp75 antibody	Rb pAb	Hu,Ms,Rat,Dm	WB, ICC/IF, IHC-P, IHC-Fr
	GTX132574	Park7 / DJ-1 antibody	Rb pAb	Hu,Ms,Rat,Dm	WB, IHC-P
	GTX103717	PLA2G6 antibody [N3C3]	Rb pAb	Hu,Dm	WB
Alzheimer's Disease	GTX129067	Uchl3 antibody	Rb pAb	Zfsh,Dm	WB
	GTX104940	ADAM10 antibody [N2C1], Internal	Rb pAb	Hu,Ms,Dm	WB, ICC/IF, IHC-P
	GTX122218	PLD3 antibody [N1C1]	Rb pAb	Hu,Dm	WB
Neuroscience	GTX101883	SNRNP antibody	Rb pAb	Hu,Dm	WB, ICC/IF
	GTX636734	ATP6V1H antibody [HL1316]	Rec Rb mAb	Hu,Ms,Dm	WB, IHC-P
	GTX637556	CaMKII antibody [HL1831]	Rec Rb mAb	Hu,Ms,Rat,Dm	WB, ICC/IF, IHC-P
	GTX123138	Atpalpha antibody	Rb pAb	Hu,Zfsh,Dm	WB, IHC-P, IHC-Wm
	GTX124111	nrv1 antibody [N1N2], N-term	Rb pAb	Dm	WB
	GTX124112	nrv2.1 antibody	Rb pAb	Dm	WB
	GTX131411	SARM1 antibody	Rb pAb	Hu,Dm	WB, ICC/IF
GTX637252	Synaptotagmin 1 antibody [HL1654]	Rec Rb mAb	Hu,Ms,Rat,Dm	WB, ICC/IF	
GTX637308	beta Tubulin 3/ Tuj1 antibody [HL1709]	Rec Rb mAb	Hu,Ms,Rat,Dm	WB, ICC/IF, IHC-P	



GLUD1 + GLUD2 antibody (GTX105765) 
 Park7 / DJ-1 antibody (GTX132574) 
 ADAM10 antibody [N2C1], Internal (GTX104940) 
 CaMKII antibody [HL1831] (GTX637556) 
 nrv2.1 antibody (GTX124112) 
 Synaptotagmin 1 antibody [HL1654] (GTX637252)



beta Tubulin 3/ Tuj1 antibody [HL1709] (GTX637308)   
 Arp2 antibody [N1C3] (GTX103311)   
 Cytochrome C antibody (GTX108585)   
 MAT1A+ MAT2A antibody [HL1679] (GTX637278)   
 ERK1 (phospho Thr202/Tyr204) + ERK2 (phospho Thr185/Tyr187) antibody [HL173] (GTX635617)   
 JNK (phospho Thr183/Tyr185) antibody (GTX133934)

## Highlighted Products

	Cat. No.	Product Name	Clonality	Reactivity	Applications
Cell cycle	GTX128155	CDC2 (phospho Tyr15) antibody	Rb pAb	Hu,Dm	WB, IHC-P, IP
	GTX629704	gamma Tubulin antibody [GT4511]	Ms mAb	Hu,Ms,Rat,Dm	WB, ICC/IF, IHC
Cytoskeleton and Migration	GTX628802	alpha Tubulin antibody [GT114]	Ms mAb	Hu,Ms,Rat,Zfsh,Dm,Crucian carp	WB, ICC/IF, IHC-P, IHC-Fr, FACS
	GTX637675	beta Actin antibody [HL1926]	Rec Rb mAb	Hu,Ms,Rat,Zfsh,Dm,Cat,Dog	WB, ICC/IF, IHC-P
	GTX100117	beta Tubulin 2 antibody	Rb pAb	Hu,Ms,Rat,Dm	WB, ICC/IF, IHC-P
	GTX103311	Arp2 antibody [N1C3]	Rb pAb	Hu,Ms,Rat,Dm	WB, ICC/IF, IHC-P
	GTX132496	GEF-H1 antibody	Rb pAb	Dm	WB
	GTX127310	Twist1/2 antibody	Rb pAb	Hu,Ms,Rat,Dm	WB, IHC-P, IHC
Epigenetics	GTX122148	Histone H3 antibody	Rb pAb	Hu,Ms,Rat,Dm,Pig,Mk,Fungi, Golden Syrian Hamster,Rice	WB, ICC/IF, IHC-P, IP, ChIP assay, IHC
	GTX630555	Histone H3K36me2 (Di-methyl Lys36) antibody [GT1488]	Ms mAb	Hu,Dm	WB
	GTX128954	Histone H3K4me3 (Tri-methyl Lys4) antibody	Rb pAb	Hu,Ms,Rat,Zfsh,Dm	WB, ICC/IF, IHC-P, IHC-Fr, IHC-Wm, Dot, ChIP assay, EM
	GTX129561	Histone H4 antibody	Rb pAb	Hu,Ms,Dm	WB, ICC/IF, IHC-P
Metabolism	GTX100118	GAPDH antibody	Rb pAb	Hu,Ms,Rat,Zfsh,Yeast,Rb,Dm,Bov, Dog,Hm,Chk,Pig,Mk,C. elegans, E. coli,Mosq,Nematode,Pika,P lant,Fish,Bacteria,Insect,milkfish	WB, ICC/IF, IHC-P, IP
	GTX635616	FACL4 antibody [HL229]	Rec Rb mAb	Hu,Ms,Rat,Dm	WB, ICC/IF, IHC-P
	GTX637278	MAT1A + MAT2A antibody [HL1679]	Rec Rb mAb	Hu,Ms,Dm	WB
Mitochondria	GTX122151	CG1458 antibody	Rb pAb	Hu,Dm	WB, IHC-P
	GTX108585	Cytochrome C antibody	Rb pAb	Hu,Ms,Rat,Dm,Dog	WB, ICC/IF, IHC-P, IHC-Fr
	GTX110089	HSP60 antibody	Rb pAb	Hu,Ms,Rat,Zfsh,Dm,Hm	WB, ICC/IF, IHC-P, ELISA
	GTX134774	MFN2 antibody	Rb pAb	Hu,Ms,Dm	WB
	GTX112673	MUL1 antibody	Rb pAb	Hu,Dm	WB, ICC/IF, IHC-P
Translation regulation	GTX133181	4E-BP1 (phospho Thr37/Thr46) antibody	Rb pAb	Hu,Ms,Rat,Dm	WB
	GTX102287	eEF2 antibody [N2C1], Internal	Rb pAb	Hu,Ms,Rat,Zfsh,Dm	WB, IHC-P
	GTX130011	eIF2 alpha antibody	Rb pAb	Hu,Dm	WB
	GTX130848	EPRS antibody	Rb pAb	Hu,Ms,Rat,Dm	WB, IHC-P, IHC-Wm, IP
	GTX115209	AIMP1 antibody	Rb pAb	Hu,Ms,Dm	WB, ICC/IF, IHC-P, IHC-Wm
Signal transduction	GTX128415	AKT antibody	Rb pAb	Hu,Dm	WB
	GTX635617	ERK1 (phospho Thr202/Tyr204) + ERK2 (phospho Thr185/Tyr187) antibody [HL173]	Rec Rb mAb	Hu,Ms,Rat,Dm	WB, ICC/IF, IHC-P
	GTX109753	Hsp90 alpha antibody	Rb pAb	Hu,Ms,Rat,Dm,Mk,Nematode	WB, ICC/IF, IHC-P, IP
	GTX70203	Jab1 antibody [2A10.8]	Ms mAb	Hu,Ms,Rat,Dm	WB, ICC/IF, IP, IHC
	GTX133934	JNK (phospho Thr183/Tyr185) antibody	Rb pAb	Hu,Ms,Dm	WB, IHC-P
	GTX630542	MEK1 + MEK2 antibody [GT1721]	Ms mAb	Hu,Dm,Cat,Dog	WB, ICC/IF
	GTX636681	PKC (pan) (zeta phospho Thr410) antibody [HL1279]	Rec Rb mAb	Hu,Ms,Rat,Dm	WB, ICC/IF, IHC-P
	GTX103976	Prostasin antibody [N1C2]	Rb pAb	Hu,Dm	WB, IHC-P, IHC-Wm
GTX108581	TAK1 (phospho Thr171) antibody	Rb pAb	Dm	ELISA-Ag	