

Your Expertise

Our Antibodies

Accelerated Discovery

# 内参、标签蛋白和报告蛋白抗体

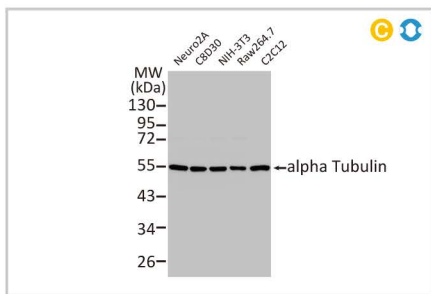
- ✓ 在多个物种中验证
- ✓ 适用于各种应用
- ✓ 在文献中被广泛引用

内参抗体用于确保将等量的每种蛋白质样品上样到 SDS-PAGE 凝胶的孔中, 为了正确解读蛋白质印迹实验的结果, 选择一个信号在测试条件下保持恒定的适当内参抗体是必不可少的。

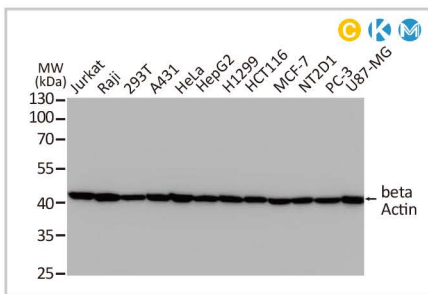


## 内参抗体产品

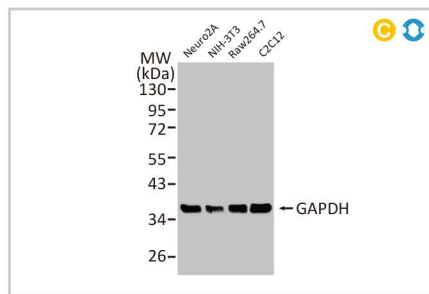
Loading Control Antibodies



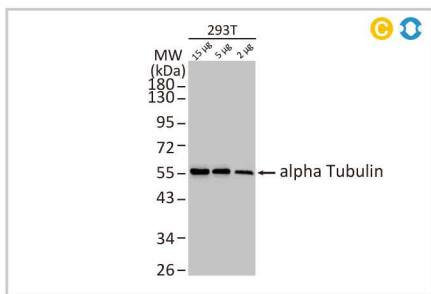
alpha Tubulin antibody [GT114] (GTX628802)



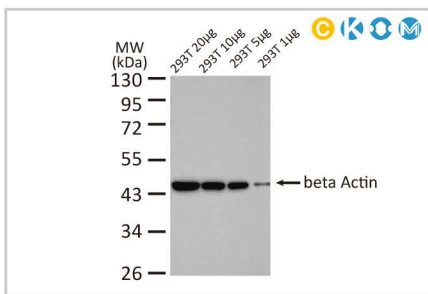
beta Actin antibody [GT5512] (GTX629630)



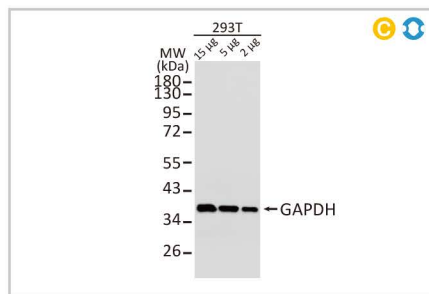
GAPDH antibody [GT239] (GTX627408)



alpha Tubulin antibody (GTX112141)



beta Actin antibody (GTX109639)



GAPDH antibody (GTX100118)

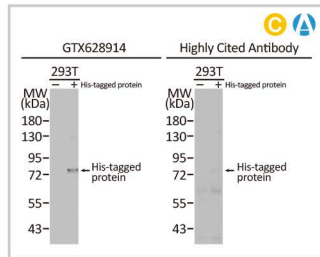
目录号	产品名称	宿主与克隆	种属反应	应用
GTX628802	alpha Tubulin antibody [GT114]	Ms mAb	Hu, Ms, Rat, Zfish, Dm, Crucian carp	WB, ICC/IF, IHC-P, IHC-Fr, FACS
GTX112141	alpha Tubulin antibody	Rb pAb	Hu, Ms, Rat, Dm, Ck, Caenorhabditis elegans, Mosquito, Tetrahymena	WB, ICC/IF, IHC-P, IHC-Fr
GTX629630	beta Actin antibody [GT5512]	Ms mAb	Hu, Ms, Rat, Zfish, Yeast, Rb, Gt, Dm, Dog, Mk, Xenopus	WB, ICC/IF, IHC-P, IP
GTX109639	beta Actin antibody	Rb pAb	Hu, Ms, Rat, Yeast, Shp, Dm, Cat, Dog, Hm, Ck, Pig, Mk, Caenorhabditis elegans, Candida albicans, E. coli, Horse, Rice, Xenopus, Treeshrew, Plant, Worm	WB, ICC/IF, IHC-P, IHC-Fr, IP
GTX627408	GAPDH antibody [GT239]	Ms mAb	Hu, Ms, Rat, Zfish, Yeast, Dm, Dog, Pig, Mk, Candida albicans, E. coli	WB, ICC/IF, IHC-P, EMSA
GTX100118	GAPDH antibody	Rb pAb	Hu, Ms, Rat, Zfish, Yeast, Rb, Dm, Bovine, Dog, Hm, Ck, Pig, Mk, Caenorhabditis elegans, E. coli, Mosquito, Nematode, Pika, Plant, Fish, Bacteria, Insect, milkfish	WB, ICC/IF, IHC-P, IP

文献引用 敲除敲弱策略 免疫捕获及质谱分析 生物特性与正交策略

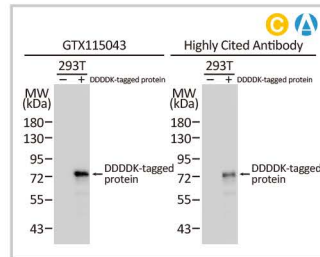


## 标签蛋白和报告蛋白抗体产品

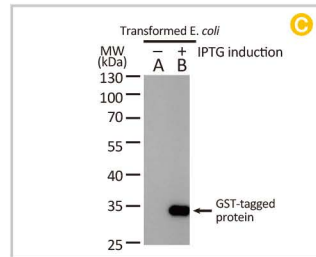
Epitope Tag & Reporter Antibodies



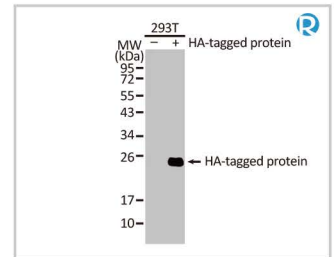
**6X His tag antibody [GT359]**  
(GTX628914)



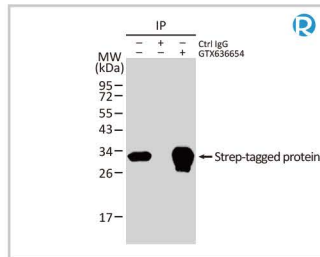
**DDDDK tag antibody [GT1216]**  
(GTX115043)



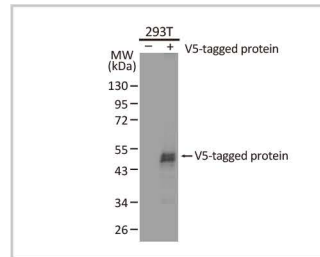
**GST tag antibody [3G10]**  
(GTX70195)



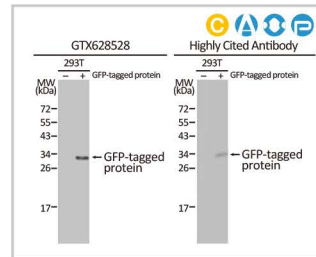
**HA tag antibody [HL1603]**  
(GTX637082)



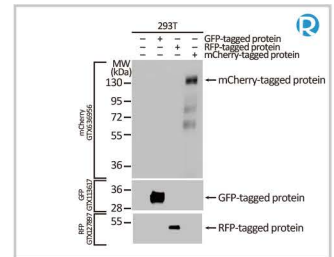
**Strep epitope tag antibody [HL1252]**  
(GTX636654)



**V5 tag antibody [GT1078]**  
(GTX635260)



**GFP antibody [GT859]**  
(GTX628528)



**mCherry antibody [HL1482]**  
(GTX636956)

	目录号	产品名称	宿主与克隆	种属反应	应用
Epitope Tag	GTX628914	6X His tag antibody [GT359]	Ms mAb	Species independent	WB, ICC/IF, IP, ELISA
	GTX636630	DDDDK tag antibody [GT1216]	Ms mAb	Species independent	WB, ICC/IF, IP
	GTX115043	DDDDK tag antibody	Rb pAb	Species independent	WB, ICC/IF, FACS, IP, ELISA
	GTX70195	GST tag antibody [3G10]	Ms mAb	Species independent	WB, IP
	GTX637082	HA tag antibody [HL1603]	Rec Rb mAb	Species independent	WB, ICC/IF, ELISA, IHC-P (cell pellet)
	GTX628489	HA tag antibody [GT423]	Ms mAb	Species independent	WB, ICC/IF, IP
	GTX115044	HA tag antibody	Rb pAb	Species independent	WB, ICC/IF, IP, ELISA
	GTX636654	Strep epitope tag antibody [HL1252]	Rec Rb mAb	Species independent	WB, ICC/IF, IP
	GTX628900	Strep epitope tag antibody [GT661]	Ms mAb	Species independent	WB, ICC/IF, IP
	GTX635260	V5 tag antibody [GT1078]	Ms mAb	Species independent	WB, ICC/IF
GTX117997	V5 tag antibody	Rb pAb	Species independent	WB, ICC/IF, IHC-P, IP, ChIP assay	
Reporter	GTX628528	GFP antibody [GT859]	Ms mAb	Species independent	WB, ICC/IF, IHC-P, IHC-Fr, IHC-Wm, IP, ELISA, Sandwich ELISA
	GTX636956	mCherry antibody [HL1482]	Rec Rb mAb	Species independent	WB, ICC/IF, IHC-P (cell pellet)
	GTX630189	mCherry antibody [GT857]	Ms mAb	Species independent	WB, ICC/IF, IHC-Wm, IHC
	GTX128508	mCherry antibody	Rb pAb	Species independent	WB, ICC/IF, IHC-Fr, IHC-Wm, IP, PLA

文献引用 重组抗体 比较抗体策略 生物特性与正交策略 蛋白过表达策略