

Analysis of **Monkey IFN- γ** by ELISA and ELISpot

Interferon- γ (IFN- γ) is a pro-inflammatory cytokine produced by activated T cells and NK cells. Our monoclonal antibody pair (capture mAb MT126L and detection mAb 7-B6-1) displays broad cross-reactivity and detects IFN- γ in Old and New world non-human primates. ELISpot and FluoroSpot assays can be used to analyze the number of IFN- γ -secreting cells and ELISA to determine the concentration of IFN- γ in solution.

Available formats



Antibodies



ELISA



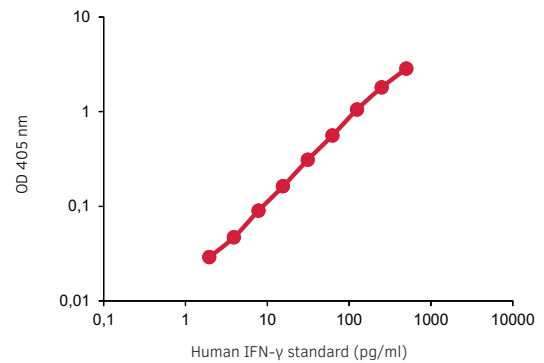
ELISpot



FluoroSpot



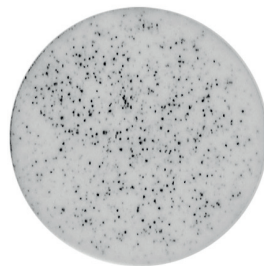
Flow cytometry



We provide **ELISA** development kits and ELISA^{PRO} kits for detection of IFN- γ . The graph shows a representative standard curve.

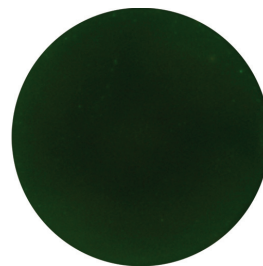


No stimuli

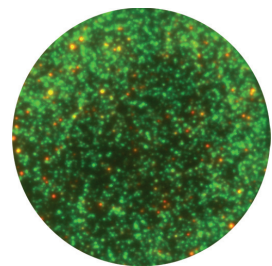


Anti-CD3

For IFN- γ analysis by **ELISpot** we offer everything from basic kits to complete kits with pre-coated plates and one-step detection reagents. In the image, PBMCs from cynomolgus macaque were incubated overnight with or without anti-CD3.



No stimuli



Anti-CD3

Detect IFN- γ using single **FluoroSpot** or combine it with IL-2 in our dual FluoroSpot kits. In the image, PBMCs from cynomolgus macaque were incubated overnight with or without anti-CD3 before secretion of IFN- γ (green) and IL-2 (red) was analyzed.



PRODUCT	SIZE	CODE
Monoclonal antibodies		
anti-human/monkey mAb MT126L, purified	250 µg/1 mg	3421M-3- 250/1000
anti-human* IFN-γ mAb 7-B6-1, biotinylated	250 µg/1 mg	3420-6- 250/1000
anti-human* IFN-γ mAb 1-D1K, FITC	100 tests	3420-7
* Reactivity with Human/Non-human primate IFN-γ		
ELISA		
Monkey IFN-γ ELISA development kit (ALP)	for 6 or 20 plates	3421M-1A- 6/20
Monkey IFN-γ ELISA development kit (HRP)	for 6 or 20 plates	3421M-1H- 6/20
Monkey IFN-γ ELISA ^{PRO} kit, pre-coated	2 or 10 plates	3421M-1HP- 2/10
ELISpot		
Monkey IFN-γ ELISpot ^{BASIC} (ALP)	for 4 plates	3421M-2A
Monkey IFN-γ ELISpot ^{BASIC} (HRP)	for 4 plates	3421M-2H
Monkey IFN-γ ELISpot ^{PLUS} (ALP)	2 or 10 white plates	3421M-4APW- 2/10
Monkey IFN-γ ELISpot ^{PLUS} (ALP)	2 or 10 clear plates	3421M-4APT- 2/10
Monkey IFN-γ ELISpot ^{PLUS} (HRP)	2 or 10 white plates	3421M-4HPW- 2/10
Monkey IFN-γ ELISpot ^{PLUS} (HRP)	2 or 10 clear plates	3421M-4HPT- 2/10
Monkey IFN-γ ELISpot ^{PLUS} (ALP), strips	2 or 10 strip plates	3421M-4AST- 2/10
Monkey IFN-γ ELISpot ^{PLUS} (HRP), strips	2 or 10 strip plates	3421M-4HST- 2/10
Monkey IFN-γ ELISpot ^{PRO} (ALP)	2 or 10 white plates	3421M-2APW- 2/10
Monkey IFN-γ ELISpot ^{PRO} (ALP)	2 or 10 clear plates	3421M-2APT- 2/10
Monkey IFN-γ ELISpot ^{PRO} (ALP), strips	2 or 10 strip plates	3421M-2AST- 2/10
FluoroSpot		
Single FluoroSpot		
Monkey IFN-γ FluoroSpot ^{BASIC} (550)	for 4 plates	FS1-21-550
Dual FluoroSpot		
Monkey IFN-γ/IL-2 FluoroSpot kit	2 or 10 plates	FS-2122- 2/10

New antibody for monkey IFN-γ

MT126L is a monoclonal antibody developed by Mabtech that reacts with non-human primate IFN-γ from both Old and New World non-human primates. MT126L is used as a capture antibody in Mabtechs Monkey IFN-γ ELISA and ELISpot kits together with the detection antibody mAb 7-B6-1.

Monkey species	Reactivity
Rhesus Macaque	Yes
Cynomolgus	Yes
Pig-tailed Macaque	Yes
Olive Baboon	Yes
Sooty Mangabey	Yes
African Green Monkey	Yes
Night Monkey**	Yes
Common Marmoset	Yes
Squirrel Monkey**	Yes

** Evaluated with recombinant IFN-γ produced in Human HEK cells.

