

# Analysis of Apolipoproteins by ELISA, ELISpot and Western blot

Apolipoproteins are of physiological importance and are associated with various diseases such as dyslipidemia and cardiovascular/neurodegenerative disease. Mabtech offers monoclonal antibodies for detection of a wide range of apolipoproteins. The ELISAs are suitable for analysis of cell supernatants and samples from serum/plasma and our ELISpot kits enable detection of apoE secretion at the single-cell level.

## Available formats



Antibodies



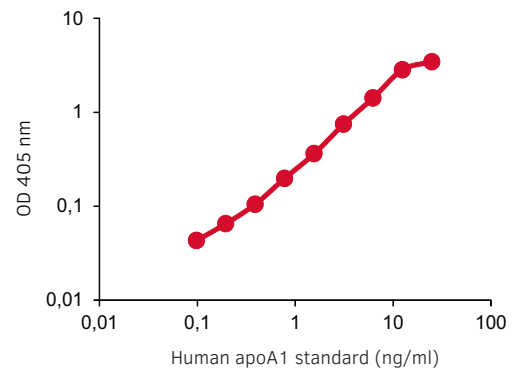
ELISA



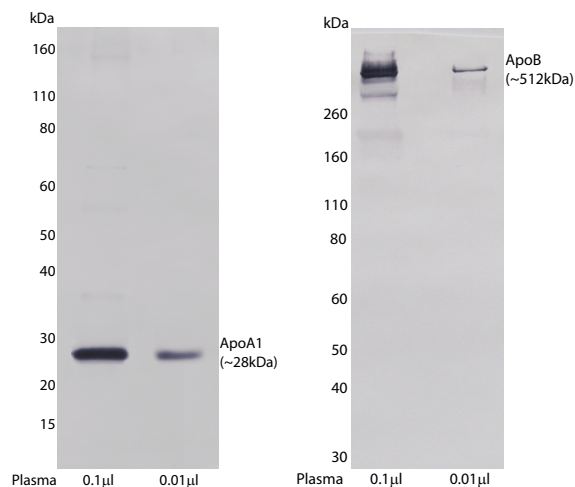
ELISpot



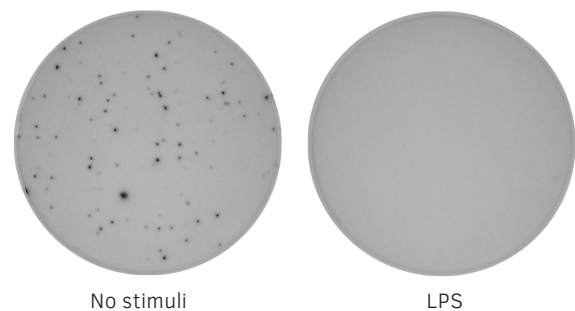
Western blot



We provide **ELISA** development kits and ELISA<sup>PRO</sup> kits for sensitive detection of apolipoproteins. The graph shows a representative apoA1 standard curve.



Many of our mAbs specific for apolipoproteins can be used in **Western blot**. In the image, human apoA1 and apoB are detected with Western blot using mAb HDL44 and mAb LDL11, respectively.



For apoE analysis by **ELISpot** we offer basic ELISpot kits and kits supplied with pre-coated plates. In the image, overnight incubation of PBMCs with LPS was shown to have a negative effect on apoE secretion.

PRODUCT	SIZE	CODE
<b>Antibodies</b>		
anti-human* apoA1 mAb HDL 110, purified	250 µg/1 mg	3710-3- <b>250/1000</b>
anti-human* apoA1 mAb HDL 44, biotinylated	250 µg/1 mg	3710-6- <b>250/1000</b>
anti-mouse apoA1 mAb mHDL93, purified	250 µg/1 mg	3750-3- <b>250/1000</b>
anti-mouse apoA1 mAb mHDL36, biotinylated	250 µg/1 mg	3750-6- <b>250/1000</b>
anti-human* apoB mAbs LDL 20/17, purified	250 µg/1 mg	3715-3- <b>250/1000</b>
anti-human* apoB mAb LDL 11, biotinylated	250 µg/1 mg	3715-6- <b>250/1000</b>
anti-human* apoB mAb LDL 11, FITC	250 µg	3715-7
anti-human apoD mAb D544, purified	250 µg/1 mg	3714-3- <b>250/1000</b>
anti-human apoD mAb D263, biotinylated	250 µg/1 mg	3714-6- <b>250/1000</b>
anti-human apoE mAb E276, purified	250 µg/1 mg	3712-3- <b>250/1000</b>
anti-human* apoE mAb E887, biotinylated	250 µg/1 mg	3712-6- <b>250/1000</b>
anti-human/monkey apoE mAb E981, purified	250 µg/1 mg	3712M-3- <b>250/1000</b>
anti-mouse apoE mAb mE1, purified	250 µg/1 mg	3752-3- <b>250/1000</b>
anti-mouse apoE mAb mE29, biotinylated	250 µg/1 mg	3752-6- <b>250/1000</b>
anti-human* apoH mAb H219, purified	250 µg/1 mg	3711-3- <b>250/1000</b>
anti-human* apoH mAb H464, biotinylated	250 µg/1 mg	3711-6- <b>250/1000</b>
anti-human apoJ (Clusterin) mAb J29, purified	250 µg/1 mg	3713-3- <b>250/1000</b>
anti-human apoJ (Clusterin) mAb J84, biotinylated	250 µg/1 mg	3713-6- <b>250/1000</b>
anti-human apoM mAbs M5, purified	250 µg/1 mg	3716-3- <b>250/1000</b>
anti-human apoM mAb M7, biotinylated	250 µg/1 mg	3716-6- <b>250/1000</b>

## ELISA

Human* apoA1 ELISA development kit (ALP)	for 6/20 plates	3710-1A- <b>6/20</b>
Human* apoA1 ELISA development kit (HRP)	for 6/20 plates	3710-1H- <b>6/20</b>
Human* apoA1 ELISA <sup>PRO</sup> kit, pre-coated	2/10 plates	3710-1HP- <b>2/10</b>
Mouse apoA1 ELISA <sup>PRO</sup> kit, pre-coated	2/10 plates	3750-1HP- <b>2/10</b>
Human* apoB ELISA development kit (ALP)	for 6/20 plates	3715-1A- <b>6/20</b>
Human* apoB ELISA development kit (HRP)	for 6/20 plates	3715-1H- <b>6/20</b>
Human* apoB ELISA <sup>PRO</sup> kit, pre-coated	2/10 plates	3715-1HP- <b>2/10</b>
Human apoD ELISA <sup>PRO</sup> kit, pre-coated	2/10 plates	3714-1HP- <b>2/10</b>
Human apoE ELISA development kit (ALP)	for 6/20 plates	3712-1A- <b>6/20</b>
Human apoE ELISA development kit (HRP)	for 6/20 plates	3712-1H- <b>6/20</b>
Human apoE ELISA <sup>PRO</sup> kit, pre-coated	2/10 plates	3712-1HP- <b>2/10</b>
Monkey apoE ELISA development kit (ALP)	for 6/20 plates	3712M-1A- <b>6/20</b>
Monkey apoE ELISA development kit (HRP)	for 6/20 plates	3712M-1H- <b>6/20</b>
Mouse apoE ELISA <sup>PRO</sup> kit, pre-coated	2/10 plates	3752-1HP- <b>2/10</b>
Human* apoH ELISA <sup>PRO</sup> kit, pre-coated	2/10 plates	3711-1HP- <b>2/10</b>
Human apoJ (Clusterin) ELISA <sup>PRO</sup> kit, pre-coated	2/10 plates	3713-1HP- <b>2/10</b>
Human apoM ELISA <sup>PRO</sup> kit, pre-coated	2/10 plates	3716-1HP- <b>2/10</b>

## ELISpot

Human apoE ELISpot <sup>BASIC</sup> (ALP)	for 4 plates	3712-2A
Human apoE ELISpot <sup>BASIC</sup> (HRP)	for 4 plates	3712-2H
Human apoE ELISpot <sup>PLUS</sup> (ALP)	2/10 white plates	3712-4APW- <b>2/10</b>
Human apoE ELISpot <sup>PLUS</sup> (HRP)	2/10 white plates	3712-4HPW- <b>2/10</b>

\* Cross-reacts with non-human primate apolipoproteins.

### Mabtech 中国授权代理商—欣博盛生物

上海:021-34613729 QQ:3196652930  
 北京:010-88594029 QQ:1627343418  
 深圳:0755-26755892 QQ:1030564316

香港:852-69410778  
 广州:020-87615159  
 Hotline:4006-800-892

www.nbs-bio.com  
 www.neobioscience.net  
 market@neobioscience.com

