

Epigenetics

Your Expertise, Our Antibodies, Accelerated Discovery.

DNMT3a, DNMT3b

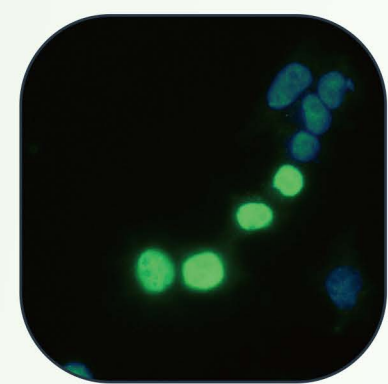
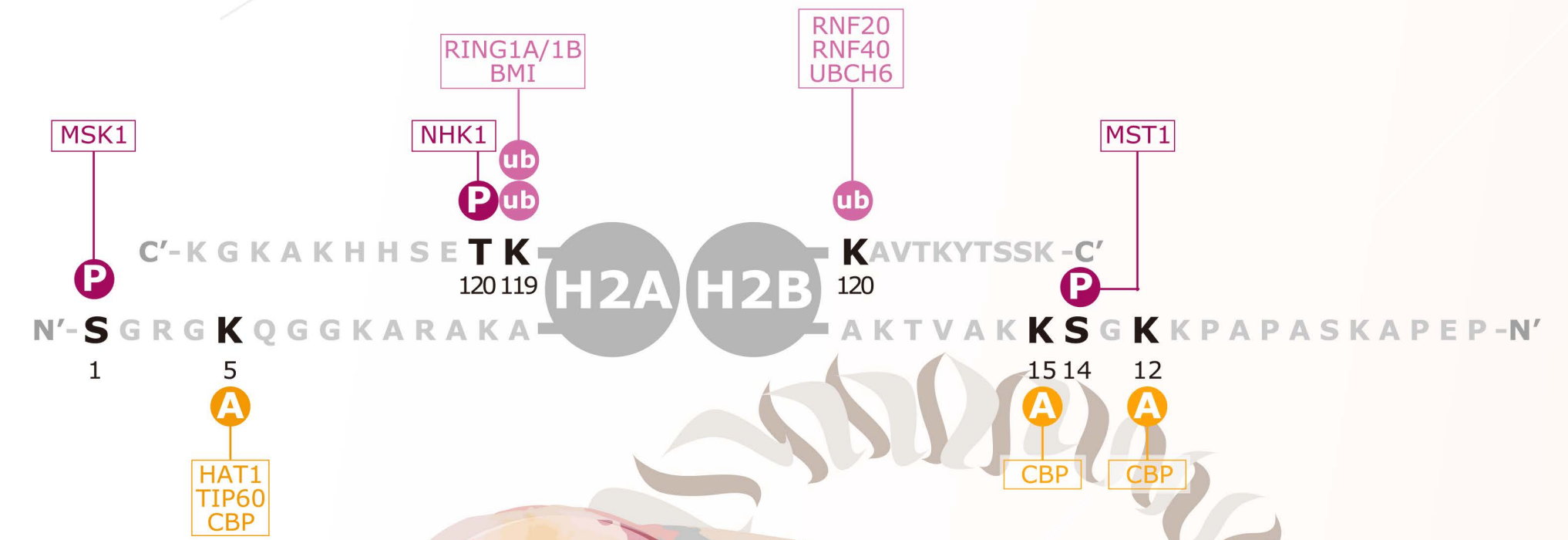
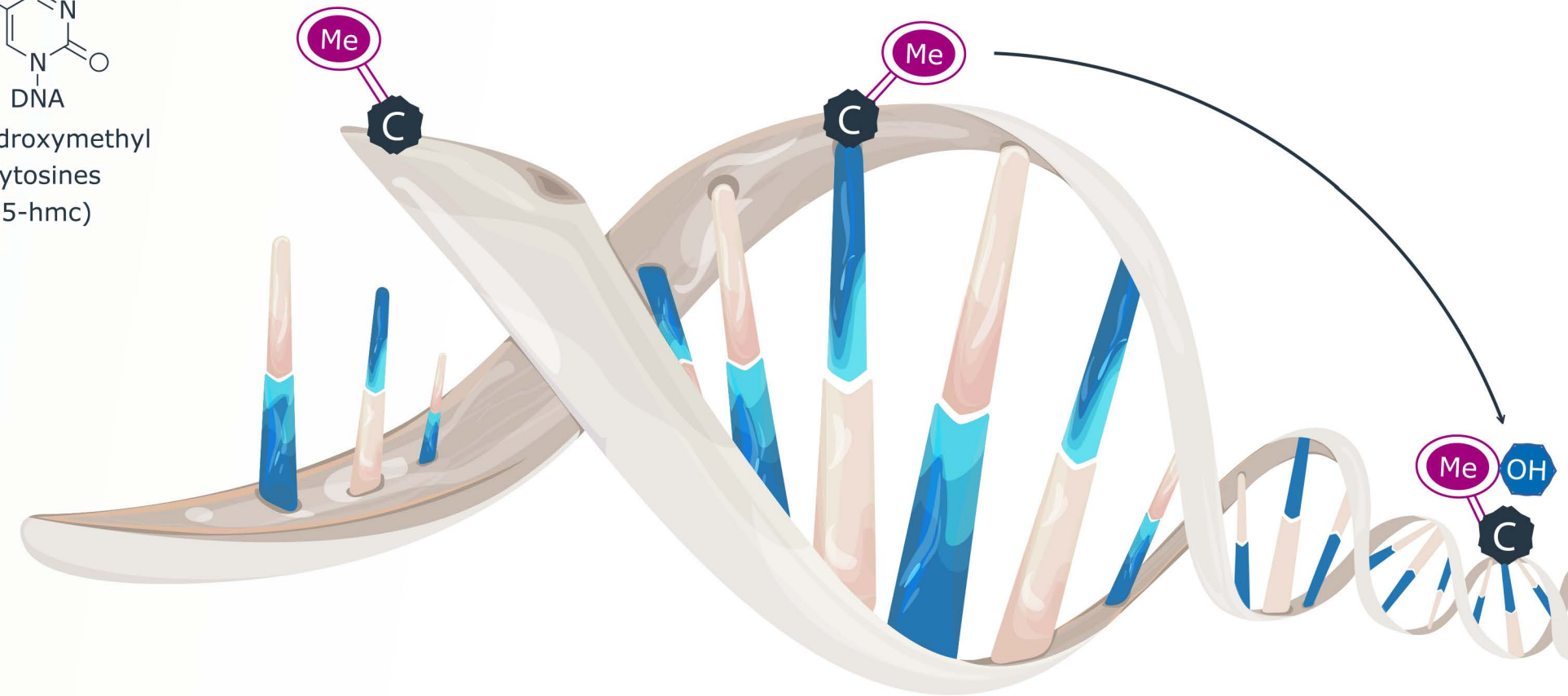
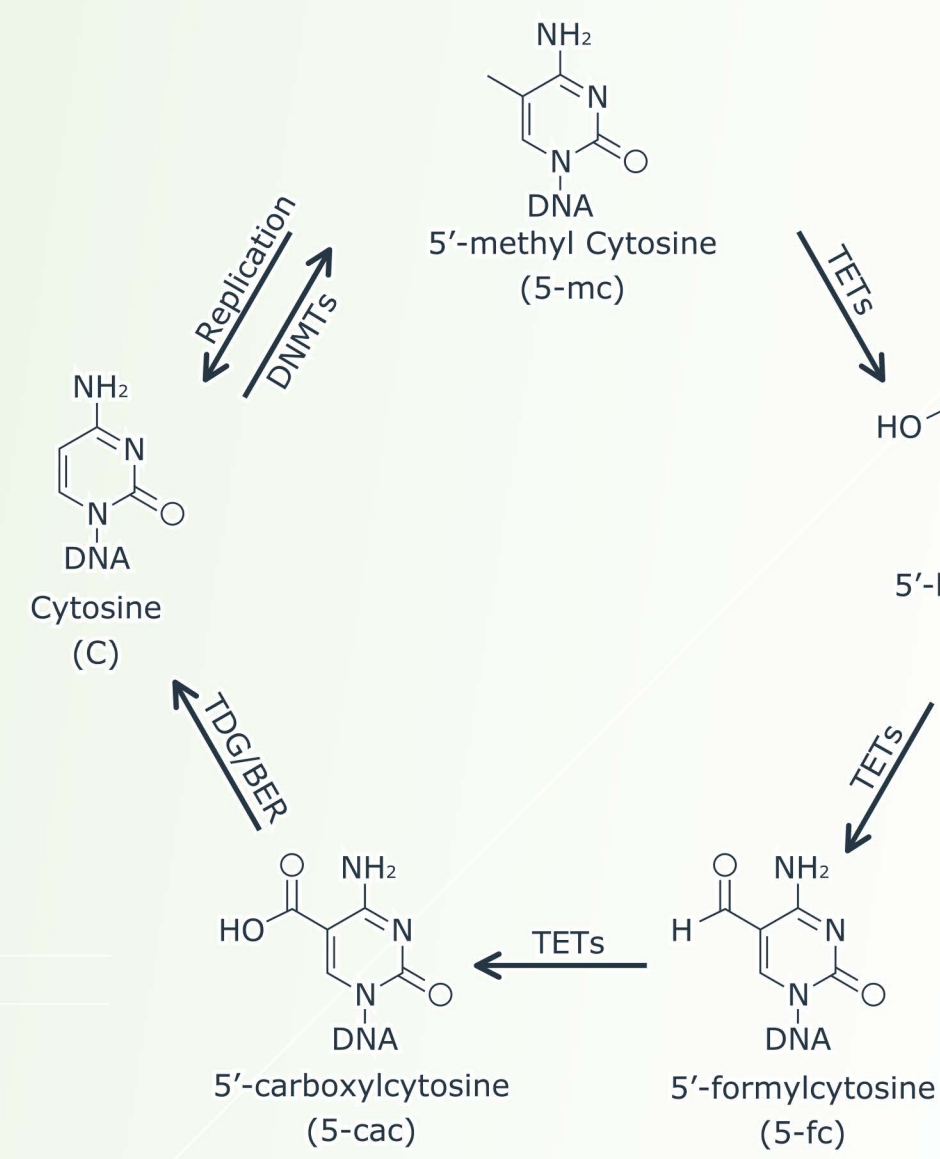
- De novo methylation

DNMT1

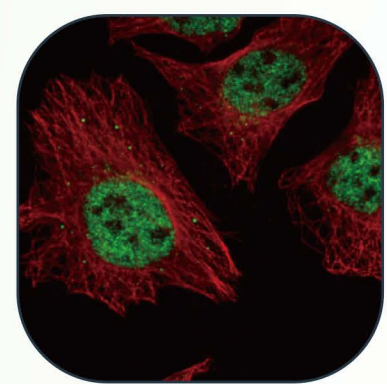
- Maintenance of methylation

TET family

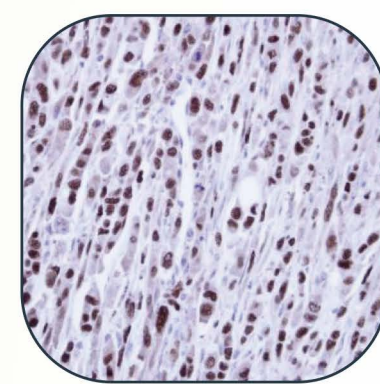
- Cytosine demethylation



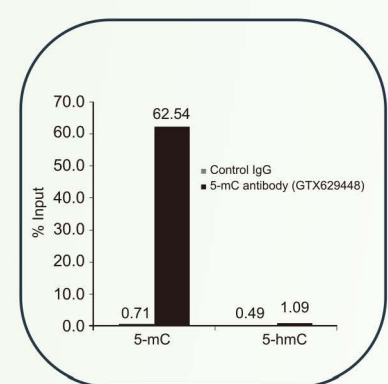
TET1 Antibody



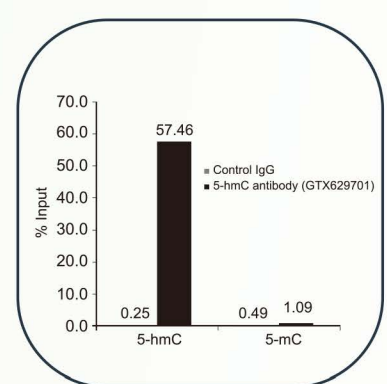
TET2 Antibody



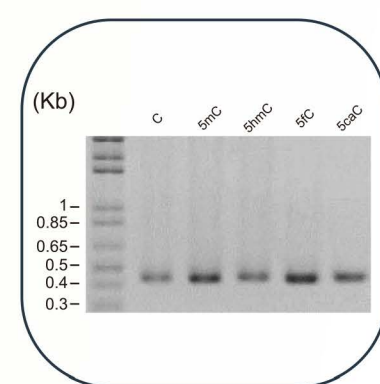
DNMT1 Antibody



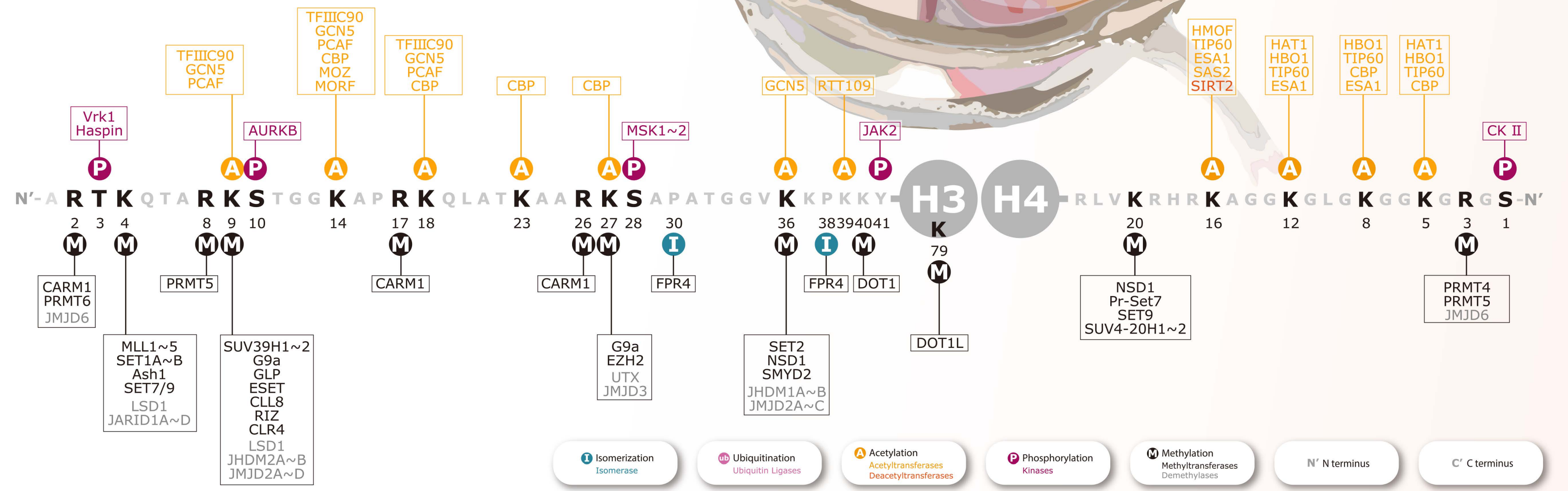
5mC Antibody



5hmC Antibody



Methylated cytosine DNA



I Isomerization
Ub Ubiquitination
A Acetylation
P Phosphorylation
M Methylation
N' N terminus
C' C terminus